

WHAT IS IT?

The Cashel Light Mask is a rechargeable headpiece that provides the horse with biologically effective levels of blue light to:

- maximise health
- enhance coat condition
- promote muscle development
- positively influence mood, behaviour and overall well-being.

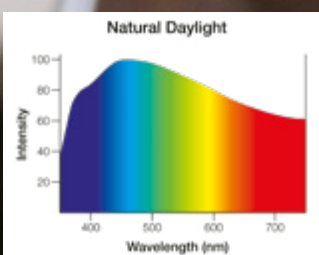
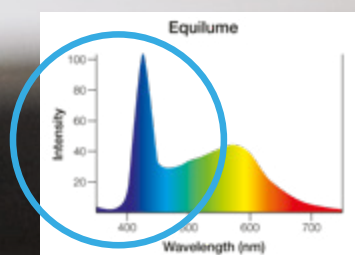
It is a mobile light therapy device designed for both competition and leisure horses which can be used in the field, in the stable and when travelling.

HOW DOES IT WORK?

The quality and duration of light exposure is the most important factor in a horse's environment that influences health and well-being. Correct lighting strengthens a horse's internal body rhythms and ensures they get maximum value from their nutrition, training and management.

Equilume's scientifically developed and tested proprietary blue light mimics the stimulatory light wavelengths of sunlight on a long summer's day.

The timed blue light helps to strengthen the horse's circadian rhythms and ensures that every cell in the body functions optimally, keeping your horse healthy from the inside out.



HOW TO USE IT

Before first use, the Cashel Light Mask should be fully charged and activated at 8am using the Equilume Smart Key. The blue light will come on at 8am and turn off automatically at 11pm each night, providing a 15 h daylength using biologically effective light that mirrors the qualities of sunlight.

After 7 days the mask must be recharged. On day 7, remove the mask and charge the cup for 3-4 hours, then refit the mask to your horse.

The battery of the Cashel Light Mask has an 18 month lifespan when used continuously and recharged weekly in this manner.

The light mask can be removed for routine grooming and exercise.

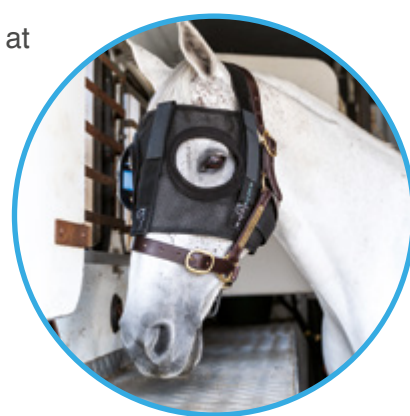
It is recommended that horses are permitted to experience a winter daylength for approximately 8 weeks each year. The mask should be removed and deactivated during this time.



When used to stimulate early shedding of a winter coat, the Cashel Light Mask should be fitted at least 8 weeks prior to time of desired coat condition.

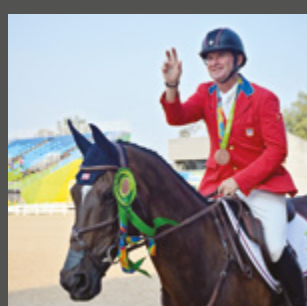
The Cashel Light Mask comes with full instructions, a charging kit and Smart Key.

Equilume Light Masks are suitable for all weather conditions and are fully adjustable to enable a customised and comfortable fit for every horse.



“After just 3 weeks of using the Cashel Light Mask, I saw a remarkable improvement in the horse's attitude and willingness to work. I am excited about the benefits Equilume lights will have for all my horses.”

Phillip Dutton, International Event Rider , USA.

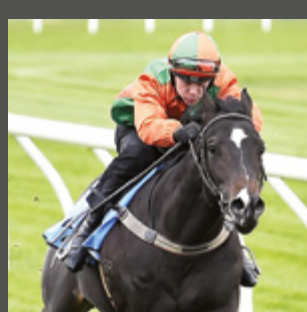


“We have had fantastic results for the last few years using Equilume Light Masks. They produce super coats, stimulate muscle development and help to keep the horses relaxed. This simple-to-use hood makes all the difference to producing horses at the top level.”

Rochelle King-Andrews, Grand Prix Dressage, AUS.

“We use Equilume Light Masks to prep our weanlings, yearlings and breeze-up horses for sales. The horses look fantastic, their coats are great and horses build up really nice top line. They will help to maximise your chances of a better result at all the sales.”

James O'Brien, Manager, Lauriston Thoroughbred Farm, AUS.

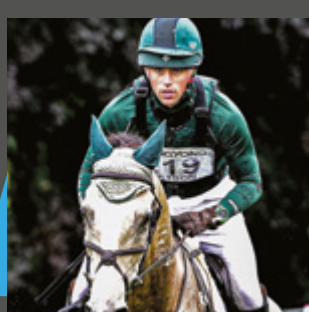
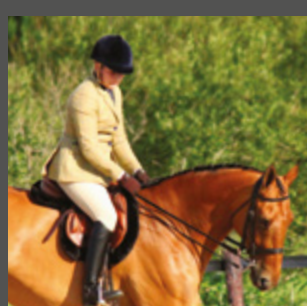


“I absolutely love the Cashel Light Mask. All of my horses have looked amazing with perfect shiny coats all season. I'm delighted with the results – they are a must have!”

Krystle McInnes, KN Show Stables, AUS.

“As well as having a beautiful summer coat in April, the most impressive difference was improved muscle development. Our instructors, physio and vet all commented they have never seen him look so strong and well and he has never felt so forward and free in himself under saddle – I put these improvements down to using the Cashel Mask.”

Donna Vowles, Showing, IRE.



“We want the best for our horses & don't want to miss out on a performance edge. The science behind Equilume makes so much sense and really helps my horses look and feel great.”

Sam Watson, International Event Rider, IRE.